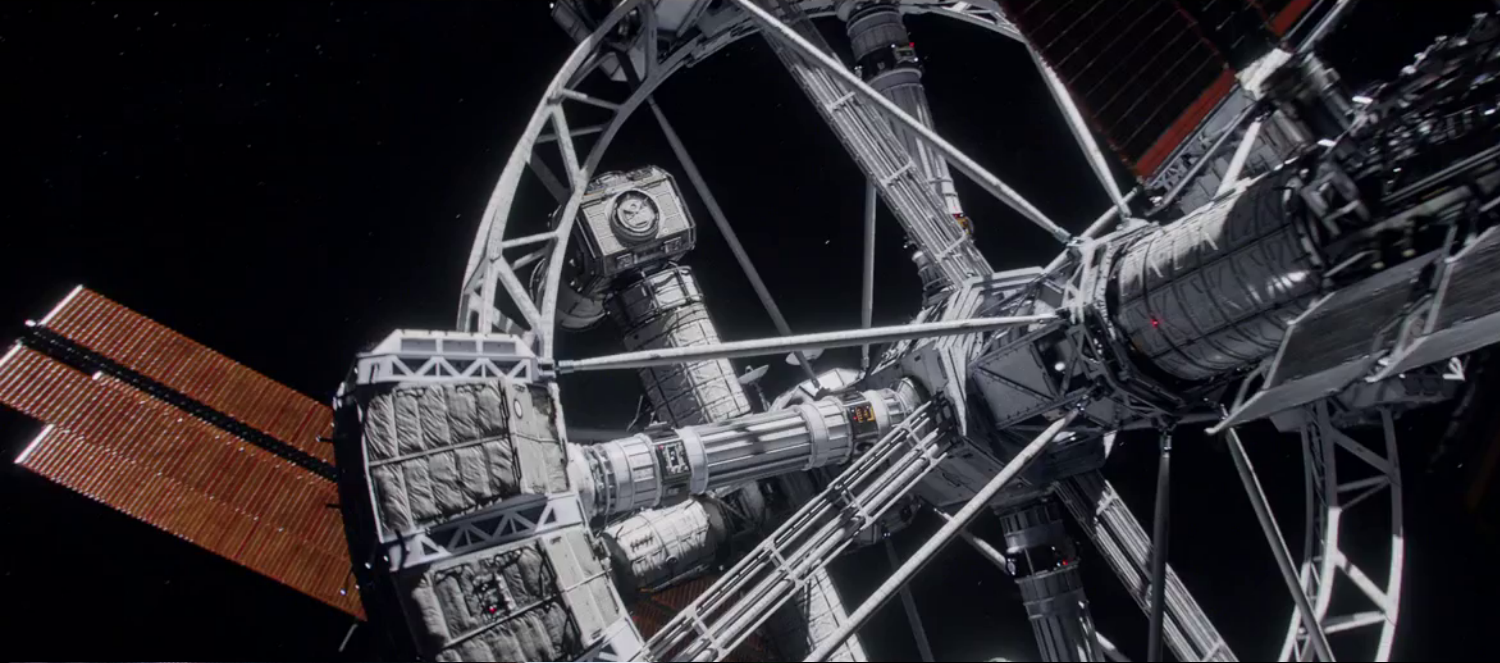


MALSUMIS

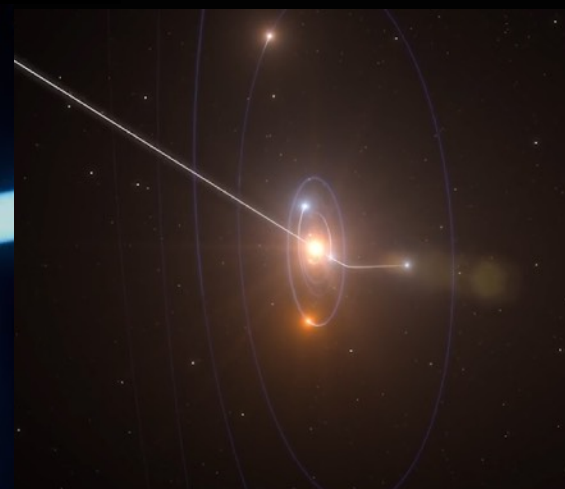
written by Devin E. Haqq





LOGLINE:

A vessel, carrying the crew bound to establish humanity's first outpost on Jupiter's moon Ganymede, is thrown into chaos when a mysterious encounter threatens the lives of everyone onboard.

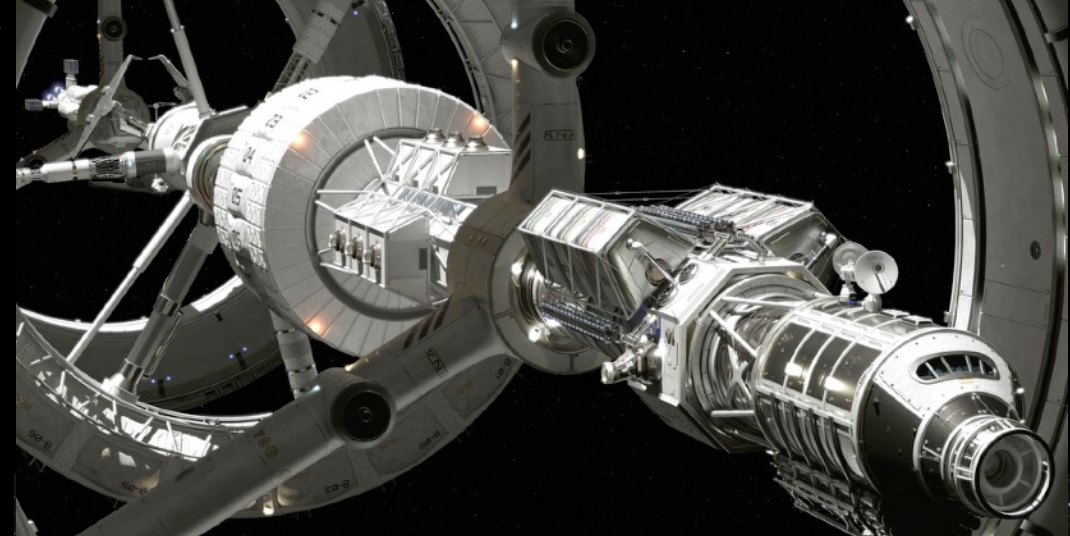
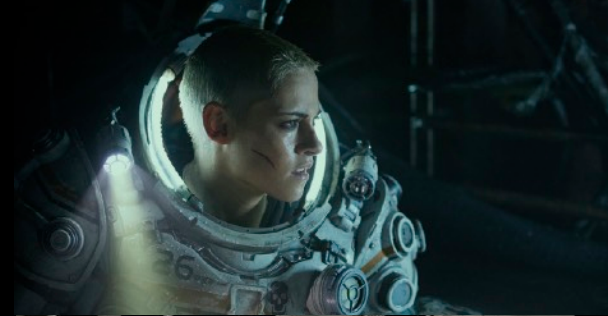


SYNOPSIS

UNSA Interplanetary vessel Minerva is a month into its voyage to Jupiter's moon Ganymede. Morale is high as the 7 person crew carries out their duties with maximum efficiency. The ship is abuzz with excitement at the waking of their youngest passenger, a 5 month old infant, making a historic journey into space via new technology known as the 'biocradle'. Everything is going according to plan until a communication from Earth sets the Minerva on an unpredictable course toward the unknown. A mysterious extrasolar comet, ominously nicknamed 'Malsumis' by Mission Control, is detected passing through the solar system. Motivated by blind ambition and hubris, Commander Celion Oluwa-Elder chooses to alter Minerva's trajectory and intercept the object for more in-depth scientific study.

The Minerva finally comes within range of the mysterious blue comet and the crew observes bizarre data. When Celion cavalierly decides to move the ship closer to the comet's tail, a rogue piece of ice strikes the vessel's communication's array. Chief Engineer Naiki Himura and Mission Specialist Paolo Baptista conduct a spacewalk to repair the damage. But while working outside the ship, something goes wrong. In a seeming panic, Paolo releases the pressure valve of his helmet and is killed by the vacuum of space.

Now the astronauts have to press on in the wake of a devastating loss, unaware of the grave danger they all have been exposed to. As one by one each crew member succumbs to a strange alien illness, Commander Oluwa-Elder must reckon with the terrible cost of her foolish ambition. Unable to decipher reality from hallucination, the crew of the Minerva struggle to survive their encounter with the extrasolar object known as Malsumis.





CHARACTERS



Commander Celion Oluwa-Elder - [44, USA] Our heroine. A distinguished military officer, who has dedicated her life to exploration of the cosmos. A veteran of multiple space missions within low earth orbit and the moon, the Ganymede expedition is her first deep space commission. Although the safety of her crew and ship are the top priorities, she often pushes the envelop in the name of scientific discovery.



Chief Flight Engineer Nathan Elder - [45, USA] Celion's husband. Stoic and introverted, Nathan graduated top of his class at MIT and holds PD's in Molecular Biology and Astrophysics. A deep desire to excel and be recognized is the source of much tension within his marriage. He has grave misgivings about the expedition to Ganymede, but keeps them to himself.



Flight Surgeon Ina Himura - [40, JAPAN] A leading authority on the affects of space travel in human beings and inventor of the 'biocradle', which may pave the way for infants and toddlers to travel in space. Unwavering confidence in the invention has lead Ina to use her newborn son (Gen) as the system's first live test subject. She adamantly believes biocradle technology holds the key to sustaining man's presence in space.



Flight Engineer Naiki Himura - [45, JAPAN] Ina's husband. A seasoned aeronautical and nuclear engineer, Naiki was primarily chosen for the mission because of his familial relationship to Dr. Himura. He has a healthy reverence for science, but remains an extremely devout man of faith. Naiki is far less enthusiastic about using Gen as a test subject for the biocradle. He does, however, have complete trust in his wife. Not the machine.



Mission Specialist Lucas Covington - [38, UK] A biologist and horticultural engineer, Lucas is openly gay. His job is to grow the food and purify the water needed in order to survive the 22 month journey to Ganymede. Escaping from the oppressive conservative values of his family, Lucas views the Ganymede mission as a fresh start for he and his partner Paolo.



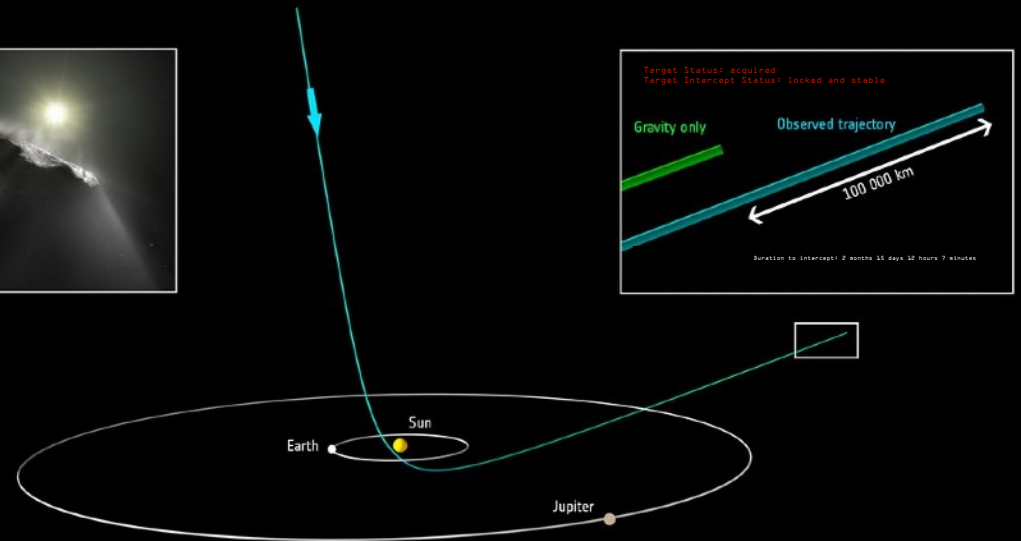
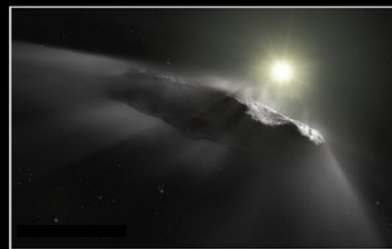
Mission Specialist Paolo Baptista - [35, Brazil] Lucas' significant other. A mechanical engineer with an overly extroverted personality. The life of the party, Paolo serves as the de facto morale officer of the crew. Although in truth, his gregarious personality is merely a mask that hides the scars of deep rooted emotional trauma. The polar opposite of Naiki Himura, the two bump heads constantly.



Mission Specialist Mae Elder - [23, USA] The youngest person to complete UNSA's training program and daughter of Nathan and Celion Elder. Mae is a medical technician, tasked to assist Dr. Himura with childcare and crew healthcare needs. She lives constantly burdened by the overwhelming shadow of her high-achieving parents.



Gen Himura - [4 months old at mission launch] Infant son to Dr. Ina Himura and Chief Engineer Naiki Himura. He is the first test subject of the revolutionary invention known as the "biocradle".



ARTIST'S STATEMENT

When Neal Armstrong stepped off the ladder of Apollo 11, making that 'giant leap for mankind', the human race was awakened to the infinite possibilities of space exploration. The cosmos is truly the final frontier, and humanity's only hope for survival beyond Earth's lifespan. Even with our great advancements in science and technology, and everything we have learned in recent history, there is still much we don't know about the universe. Despite this daunting uncertainty, for decades, brave men and women have dedicated themselves to the dangerous pursuit of solving these cosmic mysteries through space exploration. The void of space is an unrelenting desert rife with innumerable perils; lethal amounts of cosmic radiation, extreme temperatures, clouds of toxic gas light years in diameter, massive rogue objects hurtling through at thousands of miles per hour, celestial explosions that can destroy entire solar systems, and vast distances that can warp even the most disciplined human mind. Space is a terrifying place. It's no wonder horror stories on this topic continue to capture the imagination of audiences around the globe.

'Malsumis' will put People of Color at the forefront of the narrative, honoring the real-life contributions of explorers from underrepresented populations, who have been denied adequate recognition for far too long. Pioneers like Robert Henry Lawrence Jr., Mae C. Jemison, and Ellison Onizuka should not be forgotten to history. Representation matters. Not only can we engender curiosity and a desire to learn, but when young people begin to see themselves as leaders, inspirational figures, heroes, heroines, and revolutionaries, they will begin to entertain the possibility that they, too, are capable of greatness, of making profound contributions to their communities. It's up to all artists to address this issue.



AUDIENCE and BOX OFFICE TRENDS

Median Box Office and Audience Demographics, by Overall Cast Diversity (2016)

Percent Minority	N Films	Global Box (000,000s)	White Share	Black Share	Latino Share	Asian Share
10% or less	64	\$38.4	61.0%	10.8%	19.1%	9.0%
11%-20%	35	\$37.6	56.9%	12.6%	21.1%	9.4%
21%-30%	31	\$179.2	53.6%	14.1%	21.1%	11.2%
31%-40%	15	\$125.7	52.3%	16.6%	21.1%	10.0%
41%-50%	11	\$88.4	51.5%	15.9%	23.2%	9.3%
Over 50%	17	\$55.0	34.9%	39.2%	18.5%	7.3%



Movies with casts that were 20 percent minority or less made up a majority of all movies in 2016 and had the lowest global box office



The plurality of the top 173 films for 2016 had casts that were 10 percent minority or less. These 64 films also had the lowest median global box office (\$38.4 million), and White moviegoers constituted 61 percent of their audience. By contrast, people of color represented 38.7 percent of the U.S. population in 2016 but nearly half (46.4 percent) of the audience for the top films that year with casts from 21 percent to 30 percent minority — the cast diversity interval containing films with the highest median global box office.

Top 10 Films and Minority Box Office Share (2018)

Rank	Title	Box Office (000,000s)	Return	Minority Share	Percent Minority
1	Avengers: Infinity War	\$2,048.4	5.4	51%	11% - 20%
2	Black Panther	\$1,346.9	5.7	65%	Over 50%
3	Jurassic World: Fallen Kingdom	\$1,308.5	6.7	52%	21% - 30%
4	Incredibles 2	\$1,242.8	5.2	54%	11% - 20%
5	Aquaman	\$1,148.2	4.7	53%	31% - 40%
6	Bohemian Rhapsody	\$903.7	15.4	36%	11% - 20%
7	Venom	\$856.1	7.6	54%	11% - 20%
8	Mission Impossible: Fallout	\$791.1	3.4	45%	21% - 30%
9	Deadpool 2	\$734.5	5.7	48%	Over 50%
10	Fantastic Beasts: The Crimes of Grindelwald	\$653.8	2.3	48%	21% - 30%

In 2018, people of color were responsible for the majority of domestic ticket sales for six of the top 10 films, ranked by global box office. This was an increase over 2017, when minorities bought the majority of the tickets for half of the top 10 films. Six of the top 10 films for 2018 featured casts that were at least 21 percent minority.



FILMMAKER BIO

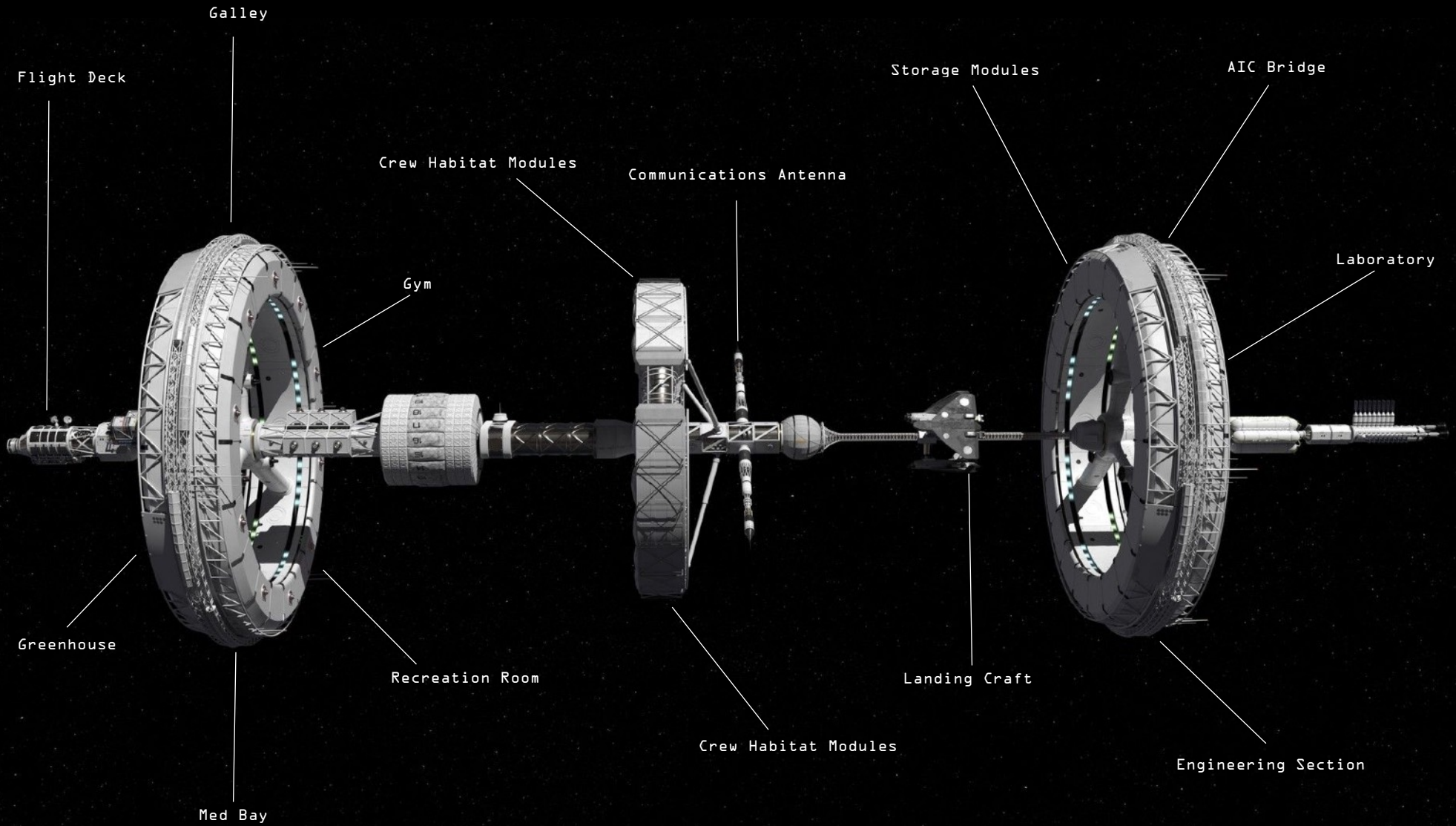
DEVIN E. HAQQ [screenwriter, director] – IFP alumni and Finalist for the HBOAccess 2020 Directing Fellowship. His feature film, *Ambition's Debt*, won the 2017 Grand Jury Award for Best Narrative Feature at the prestigious American Black Film Festival (ABFF) and the 2018 Paul Robeson Award-Honorable Mention at the Newark Black Film Festival. *Ambition's Debt* was also selected for the prestigious 2018 Newport Beach Film Festival. Devin was also a Finalist for the 2019 SAG Indie Fellowship at Stowe Story Labs and his short horror script, *Wildin' Out*, was a Finalist in the 2019 PAGE International Screenwriting Awards Competition. His short film, *The Mark*, was nominated for Best Horror at the 2020 LA Shorts International Film Festival and Best Foreign Film at the 2020 Toronto Shorts International Film Festival. Devin recently produced the short film *Cupids*, directed by Zoey Martinson, which had its world premiere at the 2021 Tribeca Film Festival as part of the 8:46 Films Initiative sponsored by Proctor & Gamble.

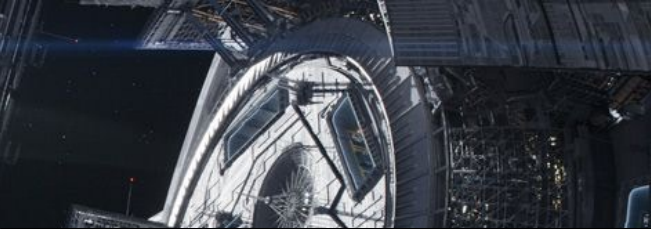
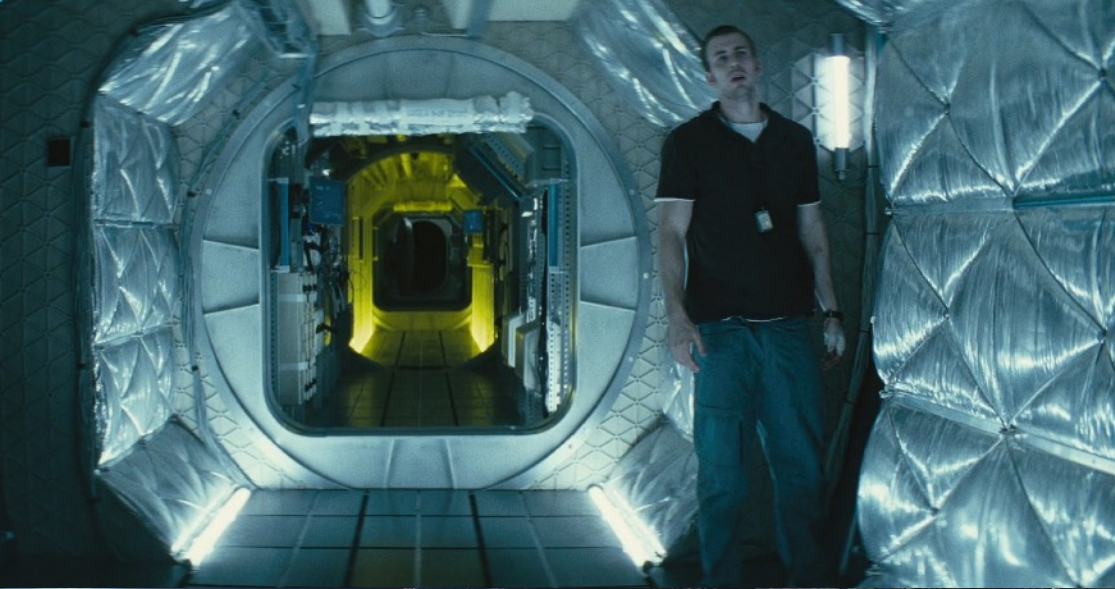


UNSA Interplanetary Vessel: MINERVA

Crew: 7

Passengers: 1





LOOK & FEEL

#TheExpanse

space

MALSUMIS

DIRECT CONTACT:

Devin E. Haqq
devin.haqq@gmail.com
646-319-5257